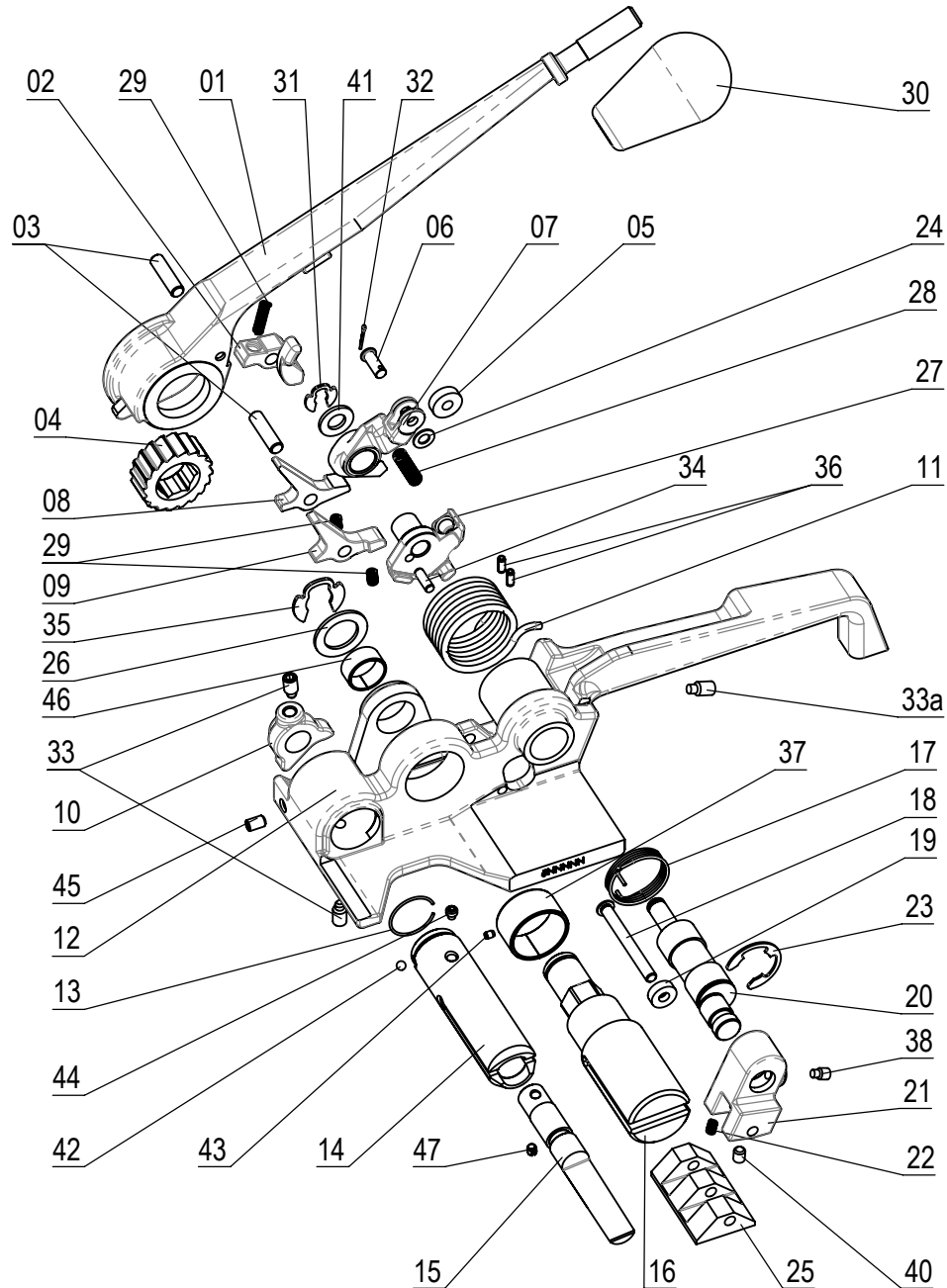


MUL-375

Heavy Duty Tensioner for Wide Cord



No	KEY No	DESCRIPTION	QTY
01	375-01	HANDLE	1
02	370-02	TENSION PAWL	1
03	370-03	PIN	2
04	370-04	RATCHET WHEEL	1
05	370-05	ROLLER	1
06	370-06	ROLLER PIN	1
07	370-07	LEVER	1
08	370-08	PAWL LONG	1
09	370-09	PAWL SHORT	1
10	370-10	CUTTER LEVER	1
11	370-11	LEVER SPRING	1
12	375-12	FRAME	1
13	375-13*	CUTTER SPRING	1
14	375-14*	CUTTER HOUSING	1
15	375-15*	CUTTER	1
16	375-16	WINDLASS	1
17	370-17	SPRING	1
18	375-18	GRIPPER FOOT SHAFT	1
19	375-19	GRIPPER FOOT ROLLER	1
20	370-20	ECCENTRIC SHAFT	1
21	375-21	GRIPPER HOLDER	1
22	370-22	GRIPPER FOOT SPRING	1
23	370-23	E RETAINING RING 3/4"	1
24	370-24	WASHER	1
25	375-25	GRIPPER FOOT	1
26	370-26	WASHER	1
27	375-27	AUXILIARY LEVER	1
28	370-28	AUXILIARY SPRING	1
29	370-29	PAWL SPRING	3
30	370-30	KNOB	1
31	370-31	KLIPRING 5/16"	1
32	370-32	COTTER PIN 1/16" x 1/2"	1
33	370-33	SET SCREW M6x12	2
33a	370-33a	SET SCREW M6x12	1
34	370-34	DOWEL PIN 4x12	1
35	370-35	KLIPRING 5/8"	1
36	370-36	SPRING PIN 1/8"x5/16"	2
37	370-37	PLANE BEARING	1
38	370-38	SET SCREW M5x8 DOG POINT	1
40	370-40	SET SCREW M5x6 FLAT POINT	1
41	370-41	WASHER 8	1
42	375-42*	BALL 4	1
43	375-43*	SPRING PIN 3x4	1
44	375-44*	SET SCREW M5x5 DOG POINT	1
45	370-45	SET SCREW M5x8 FLAT POINT	1
46	370-46	PLANE BEARING SMALL	1
47	375-47*	SPRING PIN 4x4	1

* Part of the Cutter Assembly, order Part № 375-50