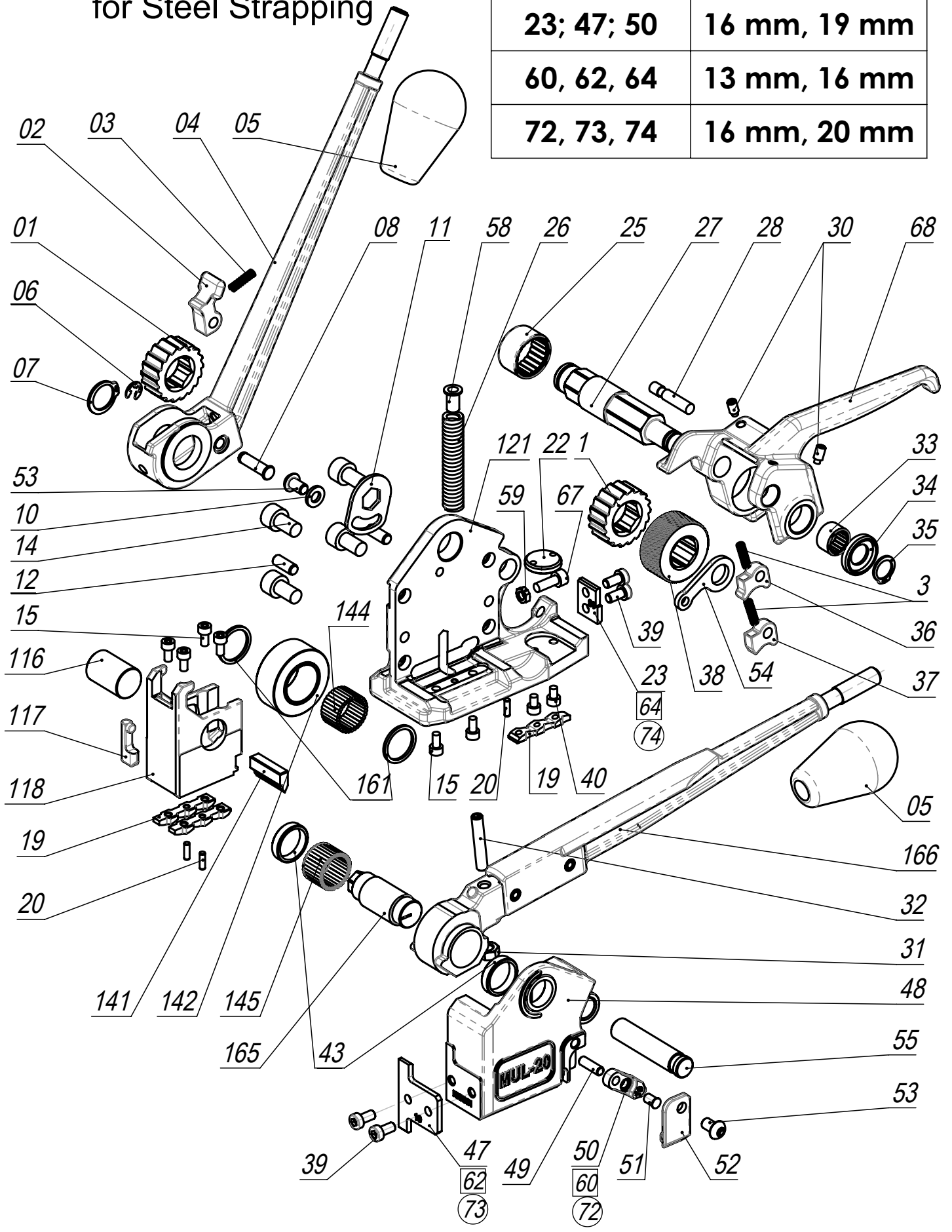


MUL-20T

Sealless Combination Tool for Steel Strapping

23; 47; 50	16 mm, 19 mm
60, 62, 64	13 mm, 16 mm
72, 73, 74	16 mm, 20 mm



MUL-20T PART LIST

Sealless Combination Tool for Steel Strapping

No	KEY No	DESCRIPTION	QTY
1	20-01	RATCHET WHEEL	2
2	20-02	TENSION PAWL	1
3	20-03	PAWL SPRING	3
4	20-04	TENSION HANDLE	1
5	20-05	KNOB	2
6	20-06	E-RING EXTREMAL SERIES 7/32"	1
7	20-07	HEAVYDUTY EXTREMAL RETAINING RING 5/8"	1
8	20-08	PIN	1
10	20-10	WASHER	1
11	20-11	ADJUSTMENT PLATE	1
12	20-12	ROLL PIN 6x16	2
14	20-14	SCREW M8x14	4
15	20-15	SCREW M4x8	6
19	20-19	DIE	3
20	20-20	DOWEL PIN 3x10	3
22	20-22	CLUTCH PLUG	1
23	20-23	STRAP GUIDE REAR 16 - 19	1
25	20-25	LARGE BEARING	1
26	20-26	FEED WHEEL SUPPORT SPRING	1
27	20-27	FEED WHEEL SHAFT	1
28	20-28	RETAINING PAWL SHAFT	1
30	20-30	SET SCREW M5x10	2
31	20-31	NUT M6	1
32	20-32	ADJUSTMENT SCREW M6x35	1
33	20-33	SMALL BEARING	1
34	20-34	WASHER	1
35	20-35	HEAVY DUTY EXTREMAL RETAINING RING 12	1
36	20-36	RETAINING PAWL LONG	1
37	20-37	RETAINING PAWL SHORT	1
38	20-38	FEED WHEEL	1
39	20-39	SCREW M5x10	4
40	20-40	SCREW M4x6	2
43	20-43	RING	2
47	20-47	STRAP GUIDE FRONT 16 - 19	1
48	20-48	SIDE COVER (sold as FRAME ASSEMBLED only)	1
49	20-49	PIN	1
50	20-50	STRAP GUIDE PAWL 16 - 19	1
51	20-51	PIN	1
52	20-52	COVER	1
53	20-53	SCREW M6x10	2
54	20-54	GUIDE ARM	1
55	20-55	FEED WHEEL SUPPORT SHAFT	1
58	20-58	SPRING BUSHING	1
59	20-59	NUT M5	1
60	20-60	STRAP GUIDE PAWL 13 - 16	1
62	20-62	STRAP GUIDE FRONT 13 - 16	1
64	20-64	STRAP GUIDE REAR 13 - 16	1
67	20-67	GRIPPER ADJUSTMENT SCREW M5x14	1
68	20-68	FEED WHEEL SUPPORT HANDLE	1
72	20-72	STRAP GUIDE PAWL 16-20	1
73	20-73	STRAP GUIDE FRONT 16-20	1
74	20-74	STRAP GUIDE REAR 16-20	1
116	20T-116	DIE HOLDER AXLE	1
117	20T-117	STRAP LIFTER	1
118	20T-118	DIE HOLDER	1
121	20T-121	FRAME	1
141	20T-141	CUTTER BLADE	1
142	20T-142	CAM FOLLOWER	1
144	20T-144	NEEDLE ROLLER	31
145	16-72	SUPPORT ROLLER 2x15.8	31
161	20T-161	WASHER	2
165	20T-165	ECCENTRIC SHAFT	1
166	20T-166	SEALING HANDLE	1